



Communities
In Schools®

Michigan

2021-2022

ANNUAL REPORT



A LETTER FROM OUR EXECUTIVE DIRECTOR AND BOARD CHAIR



TABLE OF CONTENTS

Dear Valued Supporters and Friends,

We are thrilled to welcome you to the 10th-anniversary edition of our annual report—a remarkable milestone that fills us with pride and gratitude. Over the past decade, our nonprofit has been dedicated to a single, unwavering mission: empowering students to stay in school and achieve in life. As we reflect on the journey we’ve undertaken, it is an honor to share the impact we’ve collectively achieved and the moments that have defined our success.

This year, our 10th-anniversary celebration takes on an even deeper significance as we commemorate not only our accomplishments but also the enduring partnerships that have fueled our growth. At the heart of this celebration is the Leadership in Education Dinner, a pinnacle event that brought together legendary coaches, visionaries, changemakers, and advocates from all corners of our community. It was a time to honor and celebrate our own long-serving Communities In Schools of Michigan Board Members, David Hecker and Ellen Hoekstra, inspire new avenues of collaboration, and renew our commitment to the transformative power of wrapping Michigan’s students in a community of support. Moreover, as we navigate the challenges of the past year, we have continued to provide vital support services like physical health programs, clothing drives, literacy programming and more. From mentoring programs to Integrated Nutrition Supports, your steadfast support has allowed us to amplify our impact and create lasting change for those in need.

Our 10-year journey has been nothing short of remarkable, with each year propelling us forward on a path of meaningful change, increased programming and students supported. From our humble beginnings in Lansing to the 30,000 students served this year we have evolved into a recognizable, respected and premiere force for positive transformation in education.

Thank you for being an integral part of our mission, our decade long legacy, and the boundless potential of the future. Your dedication fuels our passion and strengthens our resolve to continue shaping a brighter future through education. We invite you to delve into the following pages, where we share stories of impact, recognize extraordinary individuals, and outline our vision for the journey ahead. Together, let us embrace the next decade of possibilities and continue making a difference that resonates far beyond the present.

Mallory DePrekel
Executive Director

David Hecker
Board Chair

A Letter from Our Executive Director and Board Chair	2
Who We Are	4
Who We Serve	5
Our Impact	6
Integrated Nutrition Supports	11
Leadership in Education.....	12
Ten Year History.....	14
Our Finances	16
Our Board.....	17
Our Stewardship	18



WHO WE ARE

Communities In Schools of Michigan is part of a national network that ensures every student, regardless of race, zip code, or socioeconomic background has what they need to realize their potential in school and beyond. Working directly inside 52 schools and community sites across the state, we connect students to caring adults and community resources that help them see, confront, and overcome the barriers that stand between them and a brighter future. Together, we build a powerful change movement made up of peers, students, and alumni committed to building an equitable path to education for future generations.



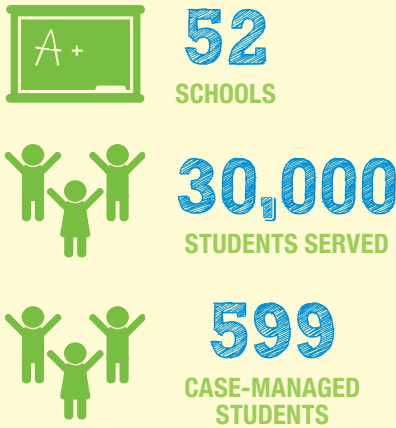
CIS of Michigan is celebrating 10 years of growth and helping Michigan students achieve in school and life. We were established as a 501c3 in February of 2012 and began supporting affiliates. We started directly serving schools in 2015, with two locations in the Lansing school district. Since that time, we've grown from a single person team to a staff of over 100, serving 52 schools during the 2021-22 school year. We look forward to the next ten years of growth, with the goal of positively impacting every Michigan student.

OUR MISSION

The mission of Communities In Schools of Michigan is to surround students with a community of support, empowering them to stay in school and achieve in life.

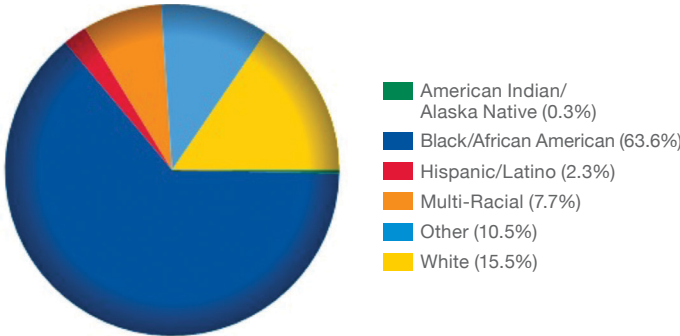


WHO WE SERVE

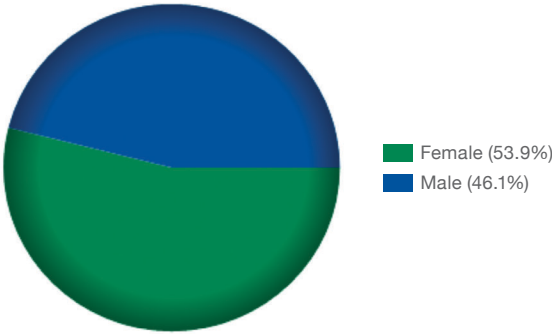


In the 2021-22 school year, we served in 52 schools and had 599 case-managed students in every grade from kindergarten to twelve grades. Our Student Support Coordinators provided supports including academic assistance, basic needs, behavioral interventions and school programming

STUDENTS BY RACE/ETHNICITY



STUDENTS BY GENDER



SCHOOLS & COMMUNITY SITES

BATTLE CREEK PUBLIC SCHOOLS

Ann J Kellogg Elementary School
Battle Creek Central High School
Battle Creek Stem Innovation Center
Dudley STEM School
Fremont International Academy
LaMora Park Elementary School
Northwestern Middle School
Post-Franklin Elementary School
Springfield Middle School
Valley View Elementary School
Verona Elementary School
W.K. Kellogg Preparatory High School

DEARBORN PUBLIC COMMUNITY SCHOOLS

Bryant Middle School
Dearborn High School
Edsel Ford High School
Geer Park Elementary School
Iris Becker Elementary School
Long Elementary School
Lowrey K-8 School

McCullough-Unis K-8 School
McDonald Elementary School
Miller Elementary School
Oakman Elementary School
River Oaks Elementary School
Salina Elementary School
Salina Intermediate School
Smith Middle School
Snow Elementary School
Stout Middle School
Whitmore-Bolles Elementary School
Woodworth Middle School

DETROIT PUBLIC SCHOOLS COMMUNITY DISTRICT

East English Village Preparatory Academy
Southeastern High School

LANSING SCHOOL DISTRICT

Sexton High School

NATIONAL HERITAGE ACADEMIES

Burton Glen Charter Academy
Detroit Enterprise Academy

Detroit Premier Academy
Flagship Charter Academy
Great Oaks Academy
Lansing Charter Academy
Legacy Charter Academy
Linden Charter Academy
Regent Park Scholars
Warrendale Charter Academy

PONTIAC SCHOOL DISTRICT

Pontiac Middle School
Pontiac High School

WAVERLY COMMUNITY SCHOOLS

Colt Early Childhood Education Center
East Intermediate School
Elmwood Elementary School
Winans Elementary School

YPSILANTI COMMUNITY SCHOOLS

Ypsilanti Community High School

COMMUNITY SITES

Boys & Girls Club of Lansing

OUR IMPACT

BASIC NEEDS



- Clothing (38.5%)
- Food (33.4%)
- Hygiene Products (13.9%)
- School Supplies (14.3%)

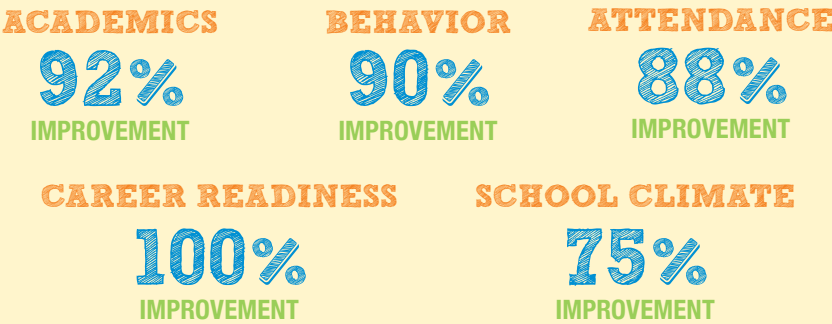
92,237
ITEMS PROVIDED

\$ 463,760
TOTAL VALUE OF ALL ITEMS

5,205
NUMBER OF HOURS

2021-2022 GOAL ACHIEVEMENT

We made progress or achieved our goals in academics, career readiness and social emotional learning in every site we served.



INTEGRATED STUDENT SUPPORTS*

WHOLE SCHOOL SUPPORTS

3,094
WHOLE SCHOOL
SUPPORTS

8,208
HOURS

30,000
STUDENTS SERVED

59,251
PARENTS/GUARDIANS
PARTICIPATING

TARGETED & ONE-ON-ONE SUPPORTS

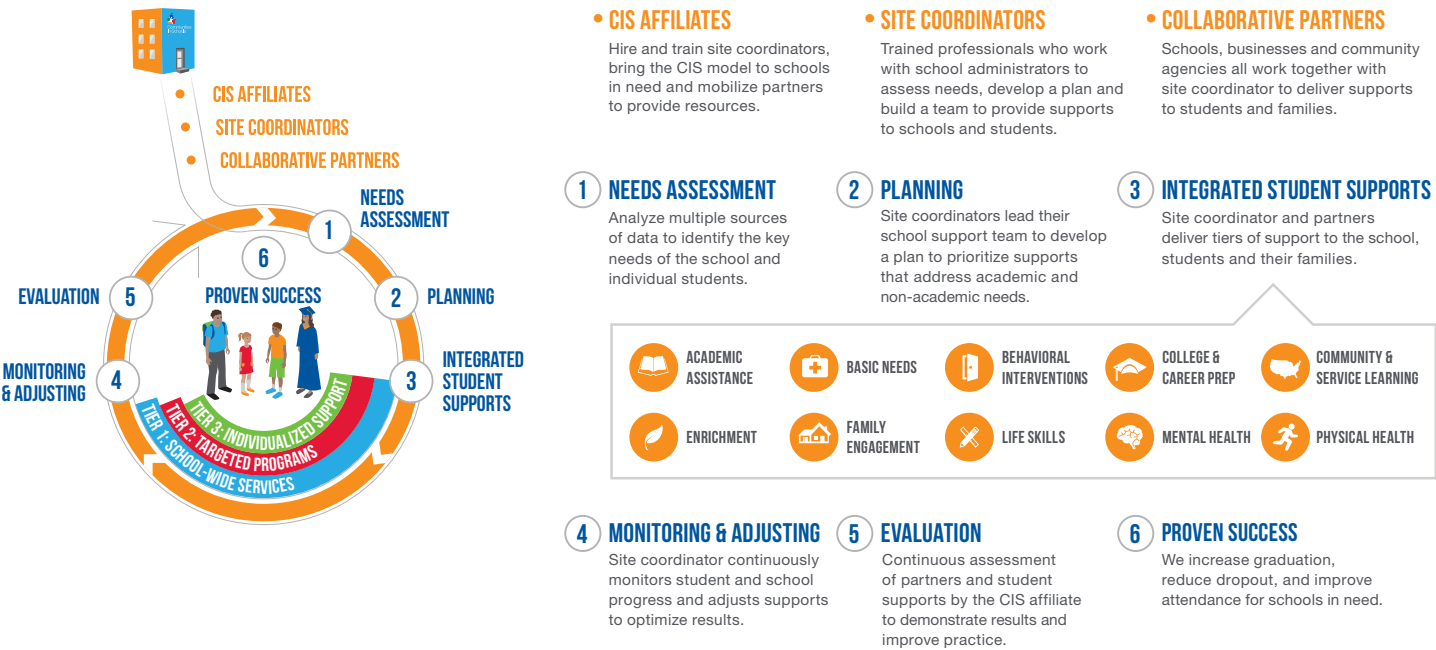
589
TARGETED SUPPORTS

583
STUDENTS RECEIVING TARGETED
AND/OR ONE-ON-ONE SUPPORTS

2,832
ONE-ON-ONE SUPPORTS

*Some of these numbers are duplicated.

OUR UNIQUE MODEL



© 2019 Communities In Schools, Inc.

TYPES OF SUPPORT PROVIDED



LITERACY PROGRAMS

Literacy Programs such as the Dearborn District-wide Spelling Bee foster camaraderie, encourage participants to push their intellectual boundaries and enhance their literacy skills. Beyond the thrill of competition, this event cultivates crucial life skills such as public speaking, composure under pressure, and dedication to diligent preparation.

By establishing a district-wide spelling bee, we promote a culture of academic enthusiasm and celebrate the exceptional talents of our youth. It's an opportunity to recognize their hard work and dedication while inspiring others to strive for excellence. This event serves as a testament to our commitment to fostering a vibrant educational community where words are not just letters on a page, but keys to unlocking boundless potential.

- Dearborn District Spelling Bee
- Virtual Literacy Day at Elmwood Elementary
- Reading Buddies
- Storyboard Walk



FOOD ACCESS

Access to food is a fundamental human right that lies at the heart of well-being and dignity. The importance of food access transcends mere sustenance; it impacts every aspect of individual and community life. Adequate nutrition fuels physical health, cognitive development, and overall vitality. It empowers individuals to reach their full potential and actively contribute to society. Without reliable access to nutritious meals, opportunities are stifled, potential goes unrealized, and inequalities deepen.

Prioritizing food access is a critical step towards a brighter future. It's a commitment to ensuring that every child has the chance to thrive, and that every community flourishes. Through programs such as community food markets, Turkey drives, and weekend food bags, we can help build a world where food is a source of strength, unity, and empowerment for all.

- Mobile Food Pantries
- Family Markets
- Weekend Bags
- Vouchers
- Food from Cooking Matters
- Emergency Food Assistance



PHYSICAL HEALTH SUPPORTS

Providing physical health supports is an investment in our youth. By nurturing bodies through exercise, nutrition, and preventative care, we create a solid foundation for a life of energy, happiness, and fulfillment. Preventative measures, such as hosting medical and dental check-ups to immunizations, can help catch potential issues before they escalate, ensuring early intervention and successful treatment. Through these supports, we help children take control of their well-being and minimize the impact of health challenges on their lives.

- Nutrition Education
- Cooking Matters Program
- Teen Cuisine
- Service Learning
- School Events
- Dental Visits
- Vision Assistance
- Enrichment Activities



BEHAVIOR SUPPORTS

Programming on ideas such as Restorative Practices heralds a transformative approach to conflict resolution and community building. Unlike traditional punitive methods, these practices prioritize healing, empathy, and accountability. They recognize that when harm occurs, it's not just about punishment; it's an opportunity for growth and reconciliation. In schools, workplaces, and communities, these practices mend the social fabric by encouraging collaboration and restoring trust. They empower individuals to take responsibility for their actions, leading to meaningful resolutions that go beyond simple punishment. By involving all stakeholders in the process, restorative practices build a sense of ownership and shared commitment to a harmonious environment.

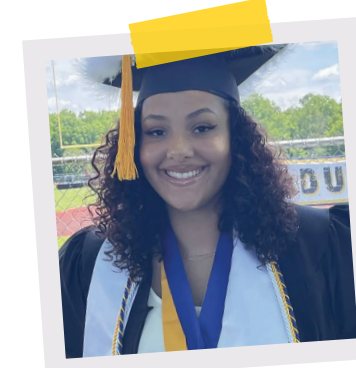
- Restorative Practices
- Support Guidance
- Social Emotional Learning



COLLEGE & CAREER SUPPORTS

Over 147 undecided senior students received information about career programs, trade schools, and financial aid options that are available to them. Many students were encouraged to apply to community colleges.

- Field trips to partner corporations
- Resume writing and mock interviews
- Field trips to local colleges
- Grow Detroit Young Talent Program





DIVERSITY, EQUITY & INCLUSION

Diversity, equity, and inclusion are hallmark values of our organization. C3 is our Climate and Culture Collective which consists of multiple workgroups (Student Voice, Organizational Health, Restorative Practices, and Mental Health/Body Work)

that all members of our organization can participate in to share their ideas, thoughts, and feedback. These workgroups and members are involved with various aspects of the organization from planning and facilitating programming, revamping and reviewing the staff evaluation process, creating resources and training for burnout and mental health, and planning the structure and content for our annual restorative practices training along with the community circles scheduled throughout the year.

- Hair like Mine
- Cultural Diversity Programs
- C3 programming
- Book readings on topics of DEI



“Throughout the first quarter I have spent most of my time focusing on relationship building with students. Getting to know and understand their strengths and weaknesses, needs and wants in the building. For me, I believe that will be beneficial to help assist the students the best way possible.”

— **Nyesha Wilson**, Student Support Coordinator – Northwestern Middle School

“During these trying times, I have had the pleasure of talking to multiple families and students on how much events like the Family Market have positively impacted them. Knowing that CIS of Michigan is still looked at as a beacon of light when things seem uncertain is why I continue to do this job. What we do is ripple work. We create positive ripples that affect everyone around us. I am grateful to be able to work as a Student Support Coordinator – All In For Kids!”

— **Stefan McCoy**, Student Support Coordinator – Fremont International Academy

INTEGRATED NUTRITION SUPPORTS

Communities In Schools of Michigan and Communities In Schools of Northwest Michigan collaborated on an Integrated Nutrition Supports Grant from the Michigan Health Endowment Fund from 2020 – 2022. Through the Integrated Nutrition Supports grant, CIS introduced new food access supports, including nutrition instruction, such as Cooking Matters classes, and service-learning projects, experiences designed to allow students to create solutions to food insecurity challenges in their communities.

CIS partnered with many organizations, including MSU Extension, Gleaners Food Bank for Southeast Michigan, Sprout and the Southwest Michigan Food Bank on this initiative.



SCHOOL OF SOCIAL WORK
PROGRAM EVALUATION GROUP
UNIVERSITY OF MICHIGAN

NUTRITION INSTRUCTION

4,282

PARTICIPANTS

13

COMMUNITIES

20,867

FOOD TAGS DISTRIBUTED



SERVICE LEARNING

189

PARTICIPANTS

7

COMMUNITIES

16

PROJECTS



“I started to change my diet and everything, and I noticed that I have more energy to do things, and I started doing things that I love again.”

— **Pontiac High School student**, 2022



LEADERSHIP IN EDUCATION

LEADERSHIP IN EDUCATION HONOREES

DAVID HECKER

BOARD CHAIR, COMMUNITIES IN SCHOOLS OF MICHIGAN

ELLEN HOEKSTRA

BOARD MEMBER, COMMUNITIES IN SCHOOLS OF MICHIGAN



For our 10-year anniversary, we honored David Hecker, the President of AFT-Michigan, and Ellen Hoekstra, a founding partner of Capitol Services, for their work as original Board Members of Communities In Schools (CIS) of Michigan. In their tenure as board members over the past ten years, Ellen and David have been instrumental in positioning CIS as the lead Integrated Student Supports program in the state and ensuring that the right people have supported our program. Through their tireless work, David and Ellen have helped usher in exponential growth at CIS over the past decade, and we are forever grateful for their service as volunteers, board members, donors, and advocates.



“Ellen and David have been instrumental to the growth of Communities In Schools of Michigan. Without their support, there is no way CIS of Michigan would be in the position we are today. Their commitment to Michigan’s kids is unwavering, and they have gone above and beyond the role of a board member. They are the true definition of what it means to be #allinforkids. I am incredibly grateful for their leadership and guidance. Thank you for all you have done for Communities In Schools these past 10 years. It’s only the beginning!”

— Mallory DePrekel, Executive Director – Communities In Schools of Michigan

LEADERSHIP IN EDUCATION ADVOCATE OF THE YEAR

TYLER GILLAND

BATTLE CREEK PUBLIC SCHOOLS, FRESHMAN ACADEMY PRINCIPAL



Tyler Gilland goes above and beyond his role as the principal, making it his mission to surround all students with the support they need to thrive. Mr. Gilland took the initiative to start a “Men of Potential” group for male students, surrounding them with male mentors, facilitating the connection of relationships, and promoting healthy relationships and networking. He has also provided an alternative education setting for those students who struggle in traditional school settings and promotes trauma-informed care and social-emotional learning structures. Mr. Gilland has also assisted and encouraged our Student Support Coordinator to bring

community partners in the school to promote awareness, education, early intervention and prevention – providing access to services that are a clear issue in both the schools and more widely the community to disrupt unhealthy social narratives. He is committed to never leaving anyone behind, he is always there to support, from knocking on doors to help overcome barriers to encouraging positive behaviors in the classrooms and hallways.

MELISSA BUTLER STUDENT OF THE YEAR

JQUAN THOMAS

REGENT PARK SCHOLARS ACADEMY



The “Melissa Butler Student of the Year Award” was named in honor of former CIS of Michigan student support coordinator, Melissa Wright-Butler who passed away after a battle with cancer to recognize her memory and her commitment to the students she served and loved.

Jquan was nominated because of his dedication to take charge of his story to define his own version of success through making progress toward goals in academics, behavior, or personal growth in addition to going above and beyond by advocating for himself and others.

“For me, it felt really good to get Student of the Year. I feel so happy about it. Getting it is about working hard and never stopping. Some students don’t get ‘Student of the Month’ for being in the situation I am, and I never thought it was going to come to me. I wish I could just tell them myself :)”

— Jquan Thomas, Melissa Butler Student of the Year

TEN YEAR HISTORY

2011

CIS National created a CIS Michigan Task Force. Determined to create the state office and the CIS of Michigan governing board.

2015

Started serving the first two schools in the Lansing School District.

2017

Added a fourth school in the Lansing School District and moved into secondary.



2012

Jeff Brown, the first State Director was hired, and started supporting CIS affiliates in Michigan.

2016

Added a third school in the Lansing School District.

2018

Began conversation to expand scope into Southwest Michigan. Mallory DePrekel was appointed State Director.



2019

Won the Innovation Challenge. Started serving in Battle Creek, Benton Harbor, Dearborn, Pontiac, Waverly, and Ypsilanti. Total of 43 schools.



2021

Started directly serving schools in Flint and Macomb County. Expanded in Dearborn, Detroit, Lansing, and Pontiac for a total of 52 schools. Received a gift from McKenzie Scott. Developed four equity pillars: student voice, restorative practices, mental health, and organizational health.



2020

Started directly serving schools in Detroit, and expanded in Battle Creek, Dearborn, and Lansing for a total of 44 sites. Started the Culture and Climate Collective. Overcame barriers from the pandemic to provide \$300,000 of basic needs during the COVID shutdown.



2022

Will serve in Grand Rapids and expand in Oakland County, Detroit, and Ypsilanti. Will serve at least 80 schools. Create an alumni network. Grow to 100+ employees.

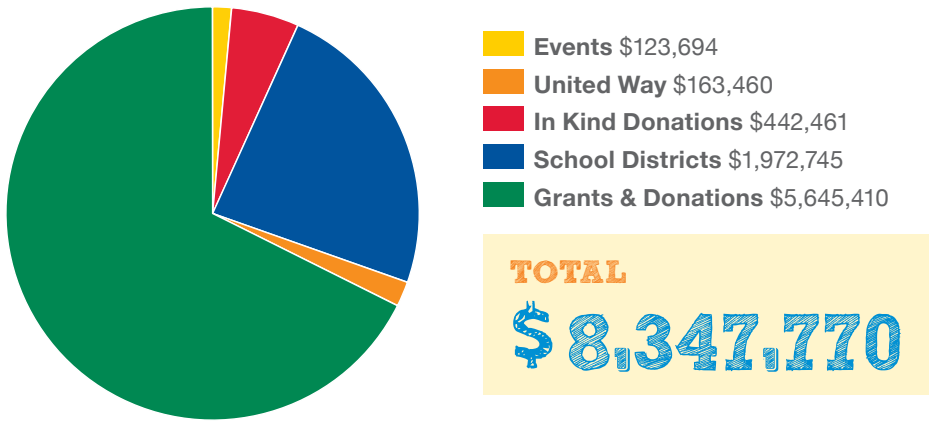
FUTURE GOALS

- Alumni member on the board.
- Develop scholarship program and endowment program.
- Sustainable financial plans.

OUR FINANCES

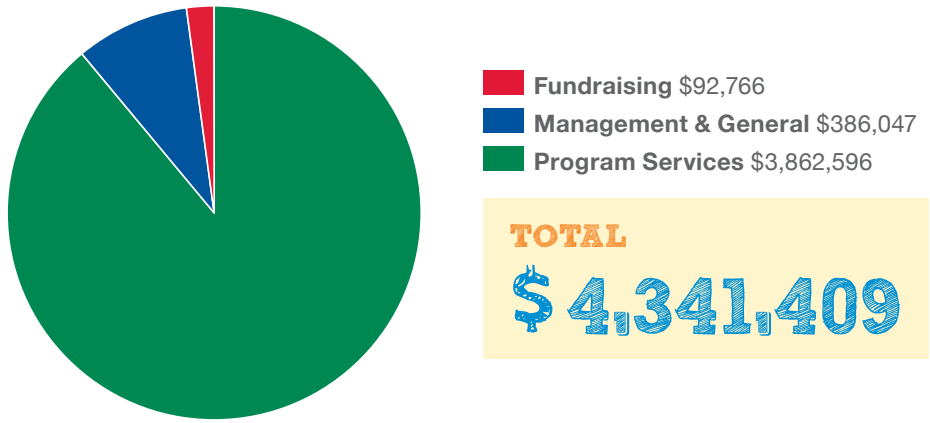
REVENUES

Where Our Funding Comes From



EXPENSES

How Our Funding Is Allocated



OUR BOARD

DAVID HECKER

Chair
AFT-Michigan

KELLIE DEAN

First Vice Chair
Dean Transportation

YVETTE COLLINS

Second Vice Chair
AT&T

JIM DEDYNE

Finance Committee Chair
Maner Costerisan

FONDA BREWER

Executive Committee Member at Large
Delta Township

THE HONORABLE DONALD ALLEN

55th District Court

SHAUN DARLING

MSU Federal Credit Union

TRAJAN DUBIEL

Michigan State University

KIA HAGENS

Wonder Woman

ELLEN HOEKSTRA

Community

WILLIAM KUIPER

Community

JORDAN LEAMING

Delta Dental of Michigan

NANCY MOODY

Community

BRIAN MOSALLAM

Spartan Wealth Management

ROBIN PIZZO

WKAR

ZACH SABIN

State Farm Insurance

TODD TENNIS

Capitol Services

KIRSTYN WALDRON

Jackson

KYRA WALLACE

Small Business Owner

MALLORY DEPREKEL

Communities In Schools of Michigan



OUR STEWARDSHIP

This list is limited to contributions of \$100 or more during the 2021-2022 year; however, we also extend our deepest appreciation to the hundreds of donors who support us with critically needed smaller gifts.

4BiddenKnowledge	Carla Philibert	DTE Energy
AFT	Christine Hanely	Ellen Hoekstra
AFT Michigan	Christine McElhone	Emily Conroy-Krutz
AJ Boggs	Christopher Gowan	Enbridge
Allison Horn	Christopher Webb	Eric Schlicht
Andy McClish	Collen Kerner	Felice Boyer
Angela McConnell	Communities In Schools National Office	Fonda Brewer
Anil Kumar	Courtney Bollman	Governor Jim and Janet Blanchard
Ann Percy	Courtney Seibold	Greg Root
Anne and Alfredo J. Lerini	Craig Simmons	HAP
Anthony Dalessandro	Dana Thompson	Helping Women Period
Anthony Volante	Daniel Dundas	Hon. Adam Zemke
AT&T Michigan	Danielle Rowland	Hon. Donald L. Allen
Ballmer Group	Darrick Earegood	Howard Walters
Barbara Merten-Dubensky	David Arce	Jack Devine
Berry and Berri Law Firm	David Dobbie	Jackson
Beth and Jon Lundy	David Hecker and Alice Audie-Figueroa	Jacob Asbury
Bill and Barbara Given	David Kasischke	Jake Tufts
Bill Kuiper & Jeanne Cooper-Kuiper	David Ladd	James Dedyne
Bill Taubman	Dawn Pullis	James Devers
Blue Cross Blue Shield of Michigan	Dean Management Services, Inc/ Dean Transportation	James Felix
Brenda Bouwman	Delta Dental Foundation	Janet Coates
Brenda Lemanski	Delta Dental of Michigan	Jared Olian
Brett Albert	Denise McDonald	Jasmine Ross
Brian Mosallam	Detroit Furniture	Jason Adcock
Canada Dry Lansing	Dianne Byrum	Jay Swindle
Capital Region Community	Donald Sherman	Jeff and Julie Olian
Capitol Fundraising Associates	Doug and Jane Paterson	Jeff and Michele Arbour
Capitol Services		Jeffrey Brown and Sandy Game

Joanne DePrekel
Joe D. Pentecost Foundation
Joe Fagan
John Ware
Jordan Leaming
Jordan and Andrew Olesnavich
Julia Goatley
Julie Rowe
Kabri Martyniek
Kathleen Straus
Kathleen Whitburn
Kathryn Jones
Kathy White
Kawana Smith
Keith Camann
Kellie and Marilyn Dean Family
Kelly Budka
Kia Hagens
Kimberly Morris
Kirstyn Waldron
KW Legacy
Laborers Local 1191
Laine Reynolds
Lance and Angie Boldrey
Lauren Kotlarczyk
Leisa Mansfield
Lisa Lindbloom
Luke Bagnall
Malek Al Kabob
Maner Costersian
Marc Hoerauf
Marcy Fuhr
Marilyn Kelly
Mark Bernstein
Mark Cousens

Mark Rosenbaum
Mark Rzepka
Mary Maurer
Mary Schuring
Mason Novess
MEA
Megan and Carrie Krupp-Merchant
Melissa Leedle
Melissa McKinley
Melt N Dip
Metro Council AFL-CIO
Michael and Dana Costello
Michael Mitchell
Michelle Fecteau
Michigan Department of Education
Michigan Health Endowment Fund
Michigan Laborers’ District Council
Michigan Regional Council of Carpenters
Middle Cities Education Association
MSUFCU
Nancy Moody
Nathan Grove
Nathan Walker
National Heritage Academies
Nick Horvath
Nick Palaian
Nickelhoff & Widick, PLLC
Paula Herbart
Philip Schloop
Playmakers
Pr. Lisa Schrott
Presbyterian Church of Okemos/ Mission Committee
Public Sector Consultant
Randy Elder

RE Olds Foundation
Renee Jefferson
Richard Worssek
Dr. Robert Dean Jr.
Robert Love
Robin Pizzo
Sara Rolon
Scott Ockerman
Shaheen Chevrolet/Michigan Chevy Team
Sharena Roland
Shaun and Erika Darling
Soles4Souls
South Michigan Food Bank
Stacey Volante
State Farm
Stephen Karpeles
Steven Zimmerman
Susan Cobb Starett
Susan Harvey
Thana Ali
Todd Tennis
Trajan Dubiel
Trinesha Goebel
UAW
UAW Region 1D
United Way For Southeastern Michigan
United Way of the Battle Creek and Kalamazoo Region
UPS Livonia
Vera R Campbell Foundation
Wayne and Diana Mavis
WKAR
Yvette Collins
Zach Sabin

**IN SCHOOLS
TO HELP
KIDS STAY
IN SCHOOL.**



**Communities
In Schools®**

Michigan

721 Capitol Ave, Suite 1
Lansing, MI 48906

www.cismichigan.org

**ALL IN
FOR KIDS**